







## Brookside, Hoddesdon, EN11 8QW

Westwood Leber are delighted to bring to the market this beautifully presented and deceptively spacious four/ five-bedroom family home, enviably positioned on the sought-after Brookside development in Hoddesdon.

This stunning property offers over 1,430 sq ft of versatile living accommodation arranged across three floors. The ground floor features a bright and welcoming entrance hall, a large front-facing snug or study ideal for home working, and a truly impressive kitchen/dining room set to the rear with French doors opening directly onto the landscaped rear garden – a perfect space for entertaining. The kitchen itself has been upgraded to an exceptional standard with sleek grey cabinetry, copper accents, and a range-style cooker.

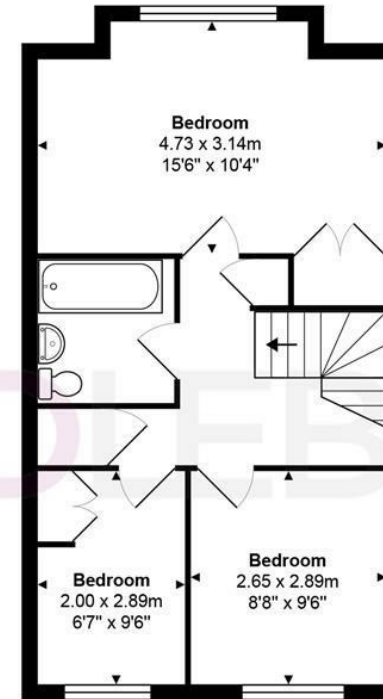
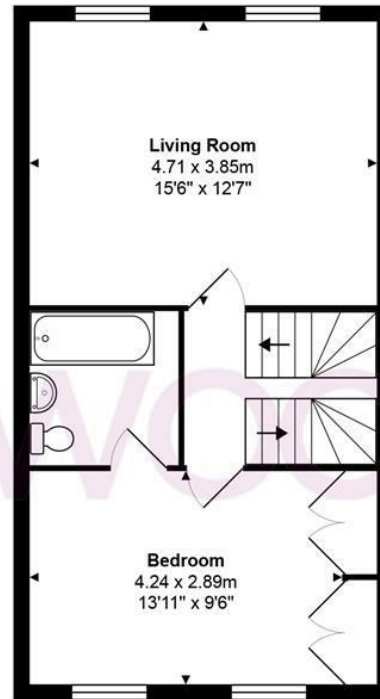
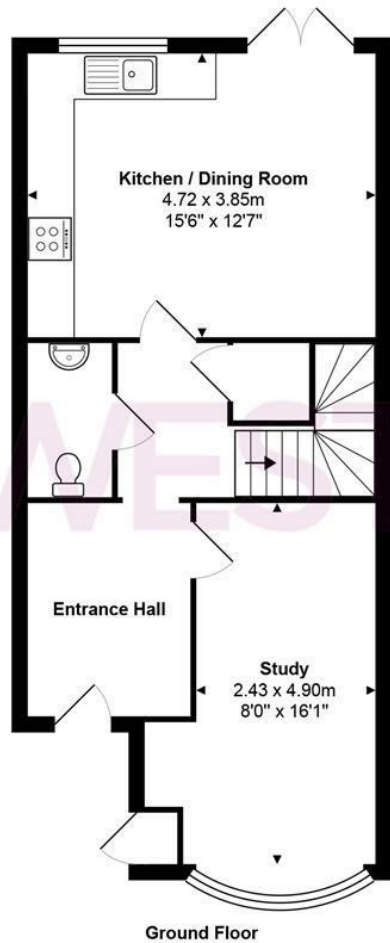
On the first floor, there is a generous living room overlooking the garden, alongside a spacious double bedroom and a stylish family bathroom. The top floor boasts three further bedrooms and another modern bathroom, including a superb principal bedroom with a full-width window flooding the space with natural light.

Externally, the rear garden has been meticulously maintained and landscaped to include a patio, artificial lawn, and mature planted borders, with a large shed to the rear – ideal for storage or conversion to a home office.

Further benefits include two bathrooms, a ground floor W/C, ample storage throughout, and a quiet residential setting with easy access to Rye House Station, Hoddesdon Town Centre, and well-regarded local schools.

We highly recommend an internal viewing to appreciate everything this wonderful home has to offer.





Total Area: approx. 133.2 m<sup>2</sup> ... 1434 ft<sup>2</sup>

THE FLOORPLAN IS FOR ILLUSTRATIVE PURPOSES ONLY AND IS NOT TO SCALE.  
Measurements and features are approximate and may differ from the actual property. Verify all details independently; no liability is accepted for errors or omissions.

Property marketing provided by [www.fotomarketing.co.uk](http://www.fotomarketing.co.uk)









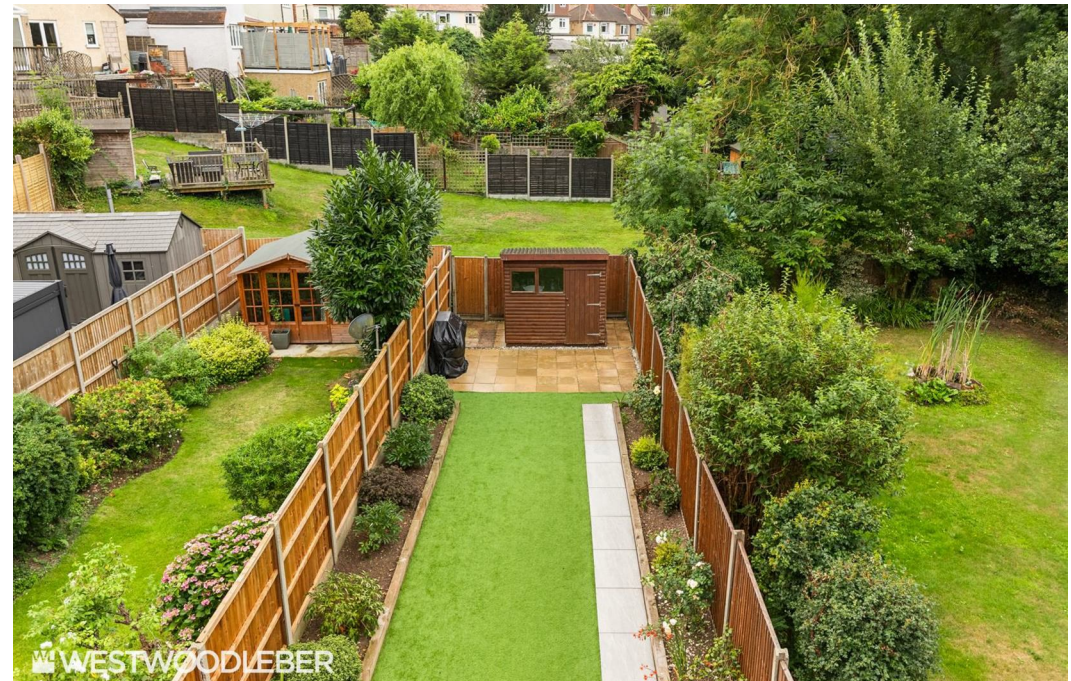




















**WESTWOODLEBER**

**WESTWOODLEBER**  
LET US GUIDE YOU HOME